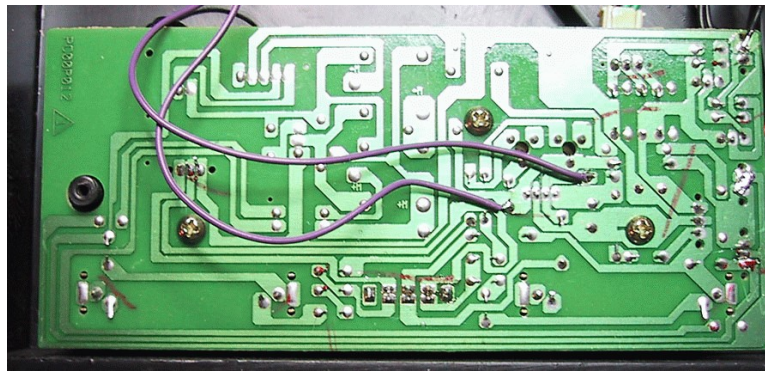
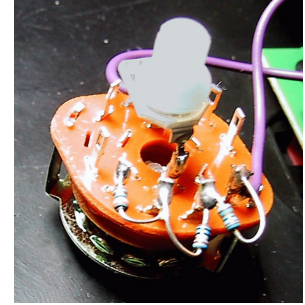
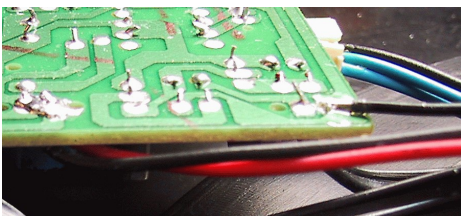


# REK-O-KUT RONDINE JR TURNTABLE CONSTRUCTION

1. Remove Gemini XL-120 turntable from its box, and discard original box and manual, keep all packing for reuse.
2. Remove dust cover and set aside.
3. Remove 9 Screws from bottom of cover.
4. Drill 3/8" hole for speed switch at 1-1/4" from left side and 4-1/4" from front.
5. Mount vintage speed switch using an extra 9 mm nut as a spacer between the deck bottom and switch top. Use nut and dress washer supplied with switch to mount switch.
6. Wire Vintage speed switch to PCB at pins 1 & 3 of driver IC.



7. Connect ground wire from rear terminal strip to PCB.



8. Apply switch escutcheon on top. Align right up to switch dress washer.
9. Put knob on switch and align to escutcheon.
10. Apply correction labels over **XL-120** and **GEMINI** designations.
11. Apply 2-1/2" silver Esoteric label over



**GEMINI** label on rear lip of deck.

12. Check operation at 33, 45 rpm, then calibrate 78 RPM speed with strobe disc and vintage speed switch set to 78.



13. Note:  
original 33/45 switch must be set to 45 and  
the vintage speed switch to 78.

14. Replace bottom cover as per reverse of above.

15. Cover "GEMINI" silk screening on headshell with label.

16. Repack in new box with:

- A) new manual
- B) new 78 rpm stylus
- C) strobe disc.

Note: Be sure to repack as per original packing.

17. Apply product identification label to box. Seal box.



# WIRING OF VINTAGE SPEED SWITCH

LEADS ARE 6.0 INCHES LONG

